

tomnod joins DigitalGlobe



Together this team can capture satellite images from anywhere on the globe. They post the images on their website at www.tomnod.com - open to the social media community to **CrowdSource** – or having the masses examine the images and “tag” items of interest. It’s easy just follow the steps . . .

STEP 1

Access the website at www.tomnod.com

Create a login with your email and a password – **or** – continue as a guest

The screenshot shows the Tomnod website interface. The browser address bar displays www.tomnod.com/nod/challenge/ninarescue2. The page title is "Rescue the Nina" with a "Start Tagging!" button. The left sidebar contains text about the schooner Nina and an update from August 19. The main area features a map of the Pacific Ocean with a dashed red rectangle indicating a search area and a small white boat icon. A "Sign up" modal form is overlaid on the map, with a red arrow pointing to it. The form includes fields for "Email" (pre-filled with "jame@example.com") and "New Password" (masked with dots), a "Sign up" button, and links for "Already have an account? Login", "Forgot your Password? Reset it", and "or Sign in as a Guest".

Tomnod Campaigns / Rescue the Nina

Rescue the Nina

[Start Tagging!](#)

New Zealand Today at 10:08 AM

The schooner Nina has been missing since June 4, 2013 while en route from New Zealand to Australia.

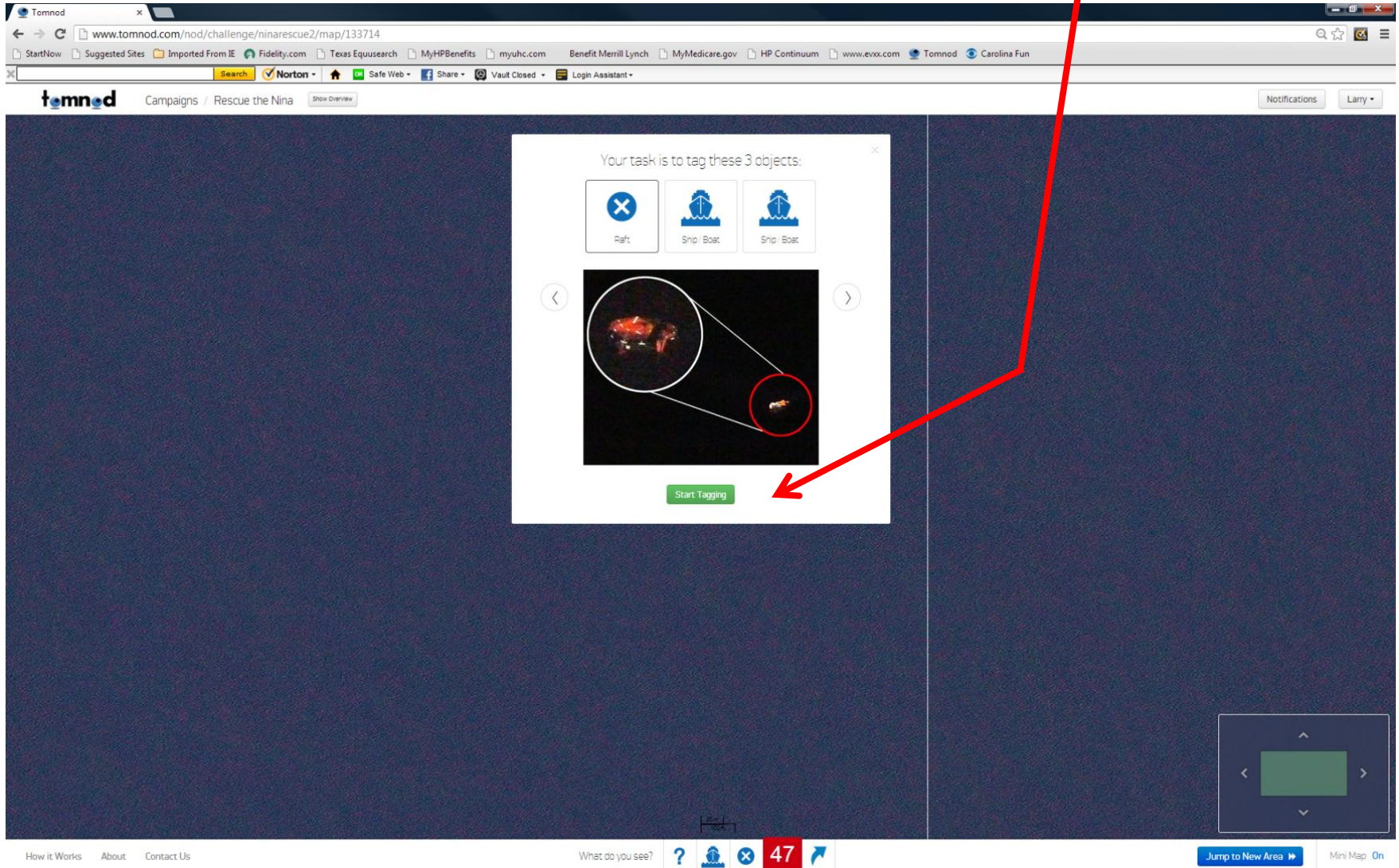
UPDATE: We added 2 more new images for you to search through on Aug 19.

Help us tag...

How it Works About Contact Us

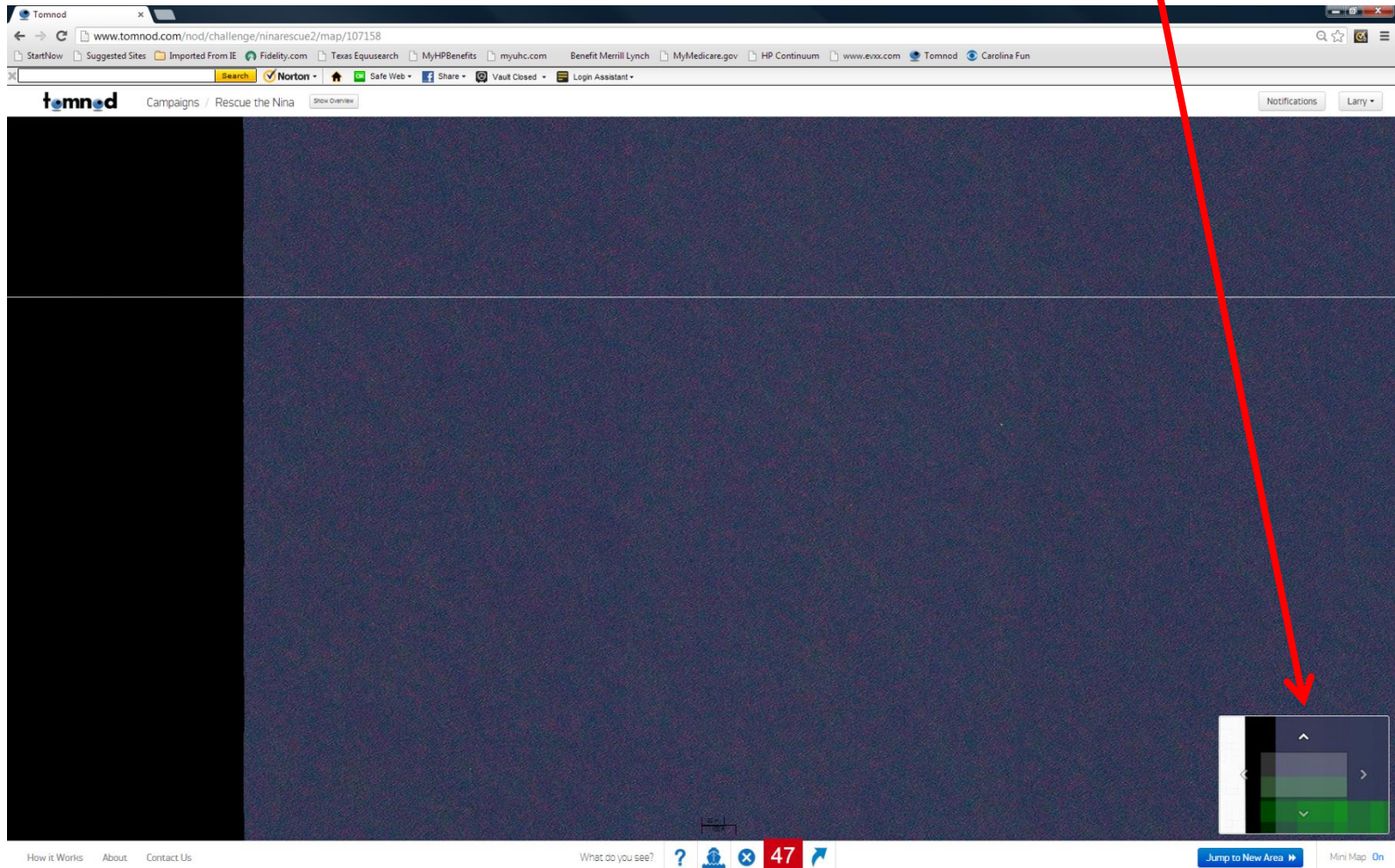
STEP 2

Begin the *Rescue the Nina* Challenge



STEP 3

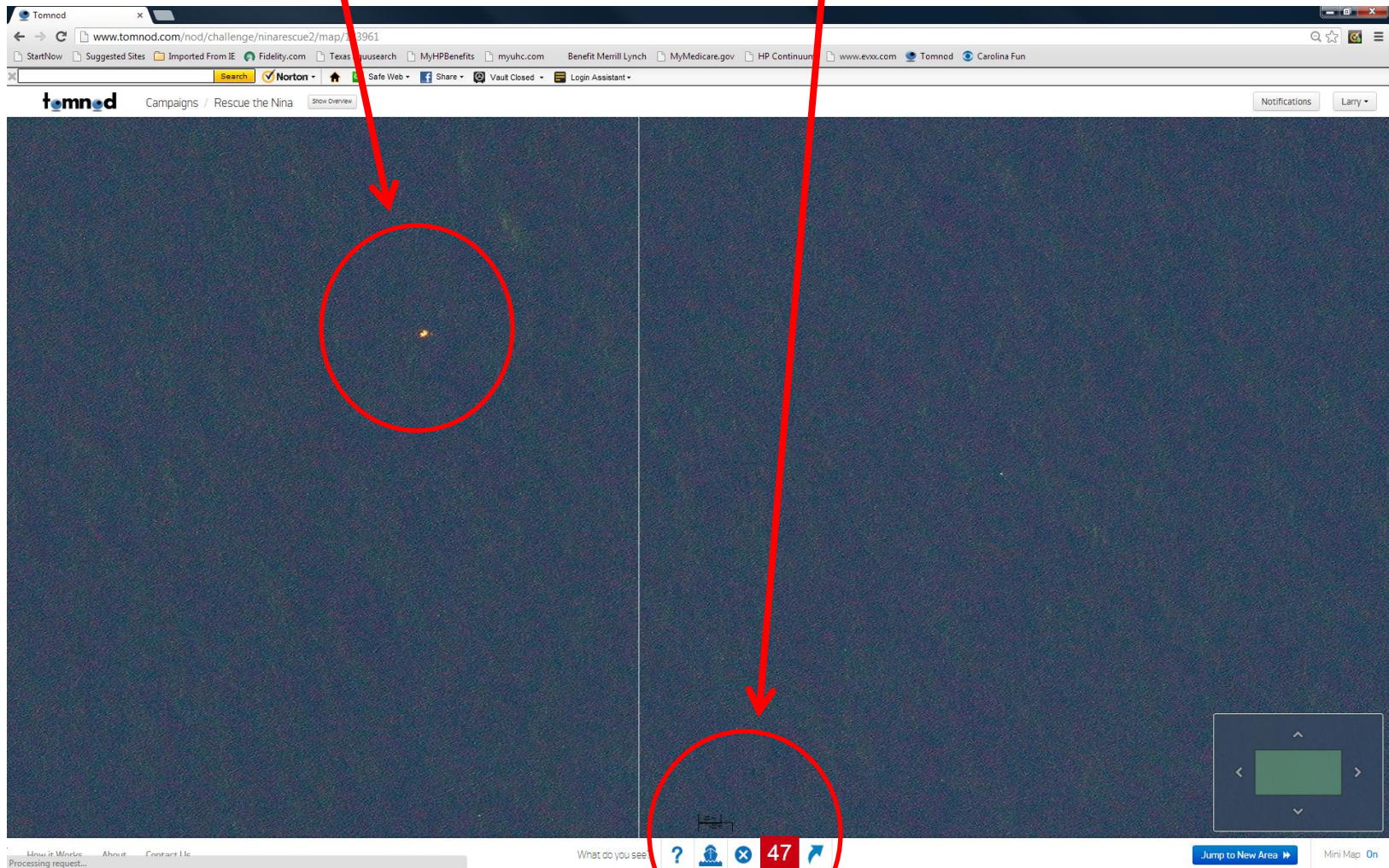
Start searching the area
Advance up/down/right/left with the Mini Map



STEP 4

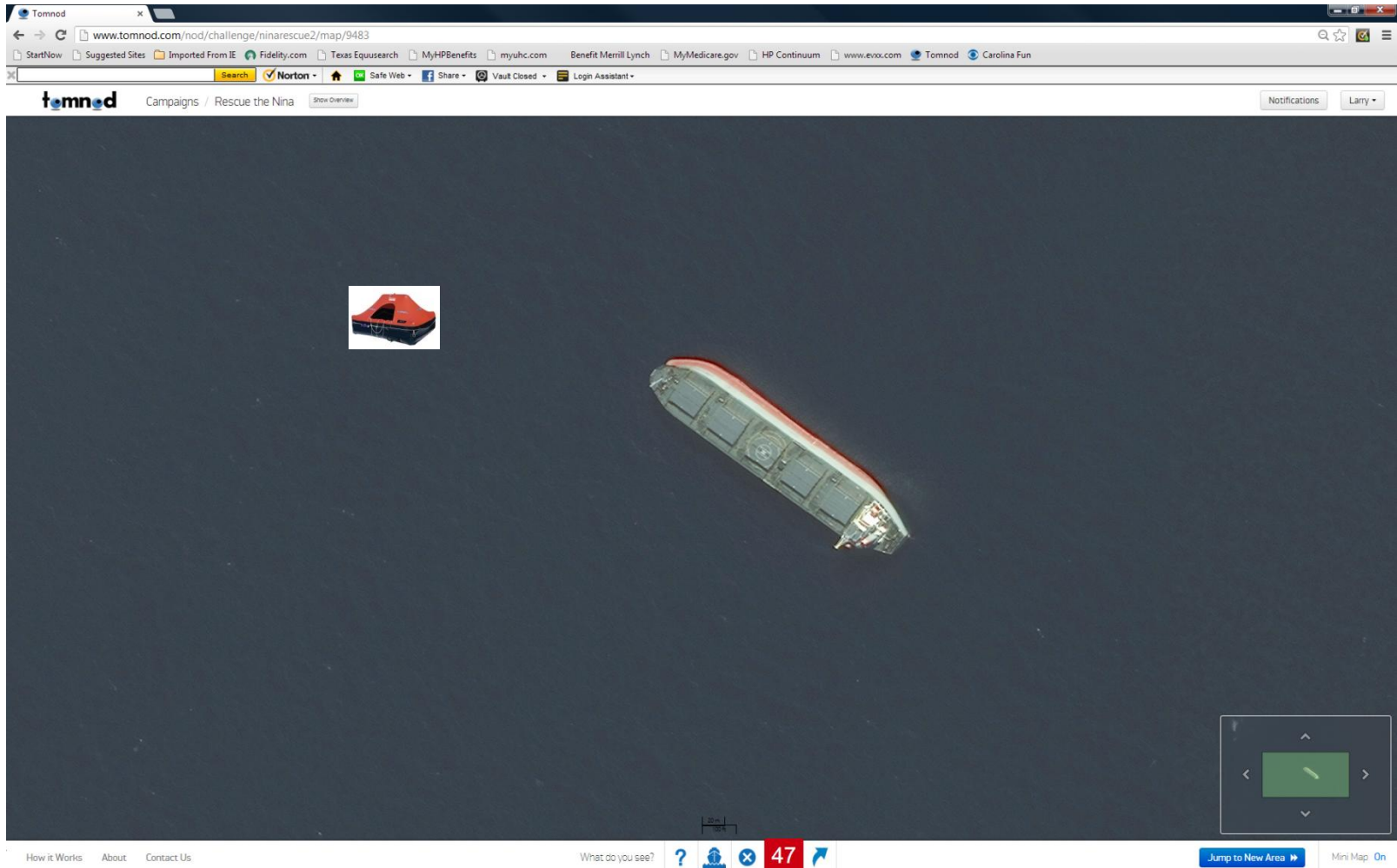
What's that "dot" on the screen?

Tag it with an icon



STEP 4A

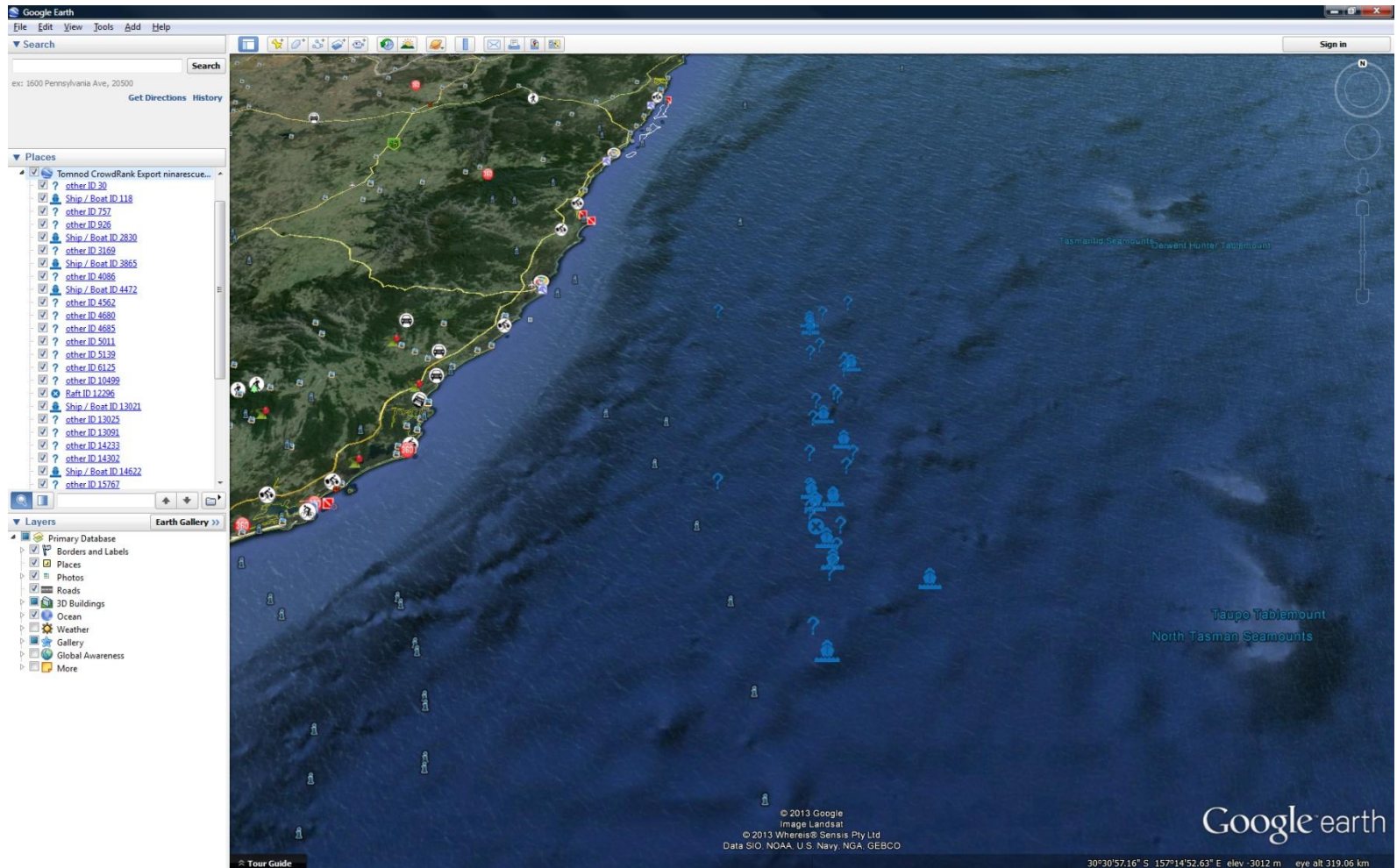
Because it could be a ship or life raft
And you could BE the one who found it!



STEP 5

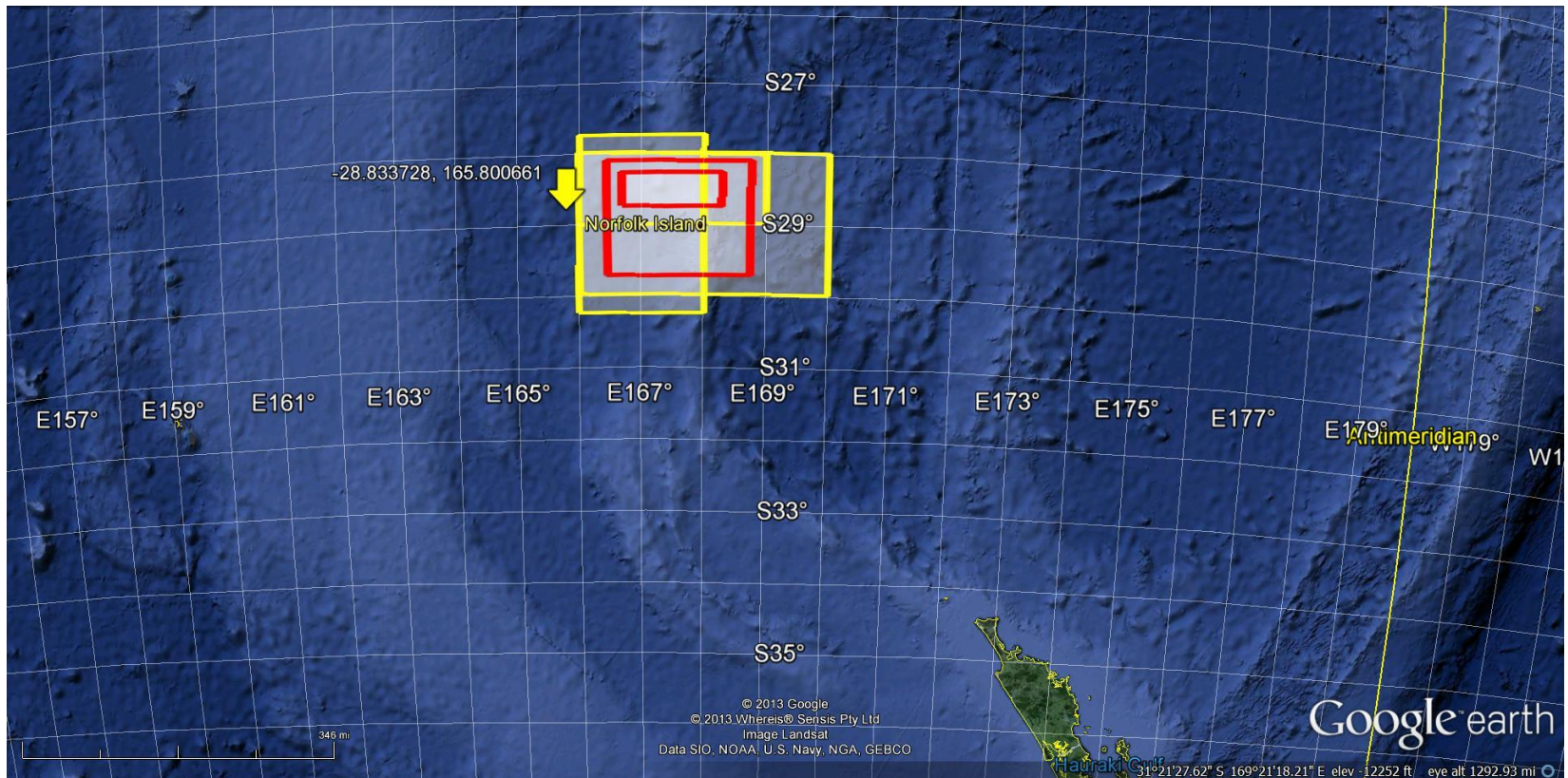
What happens to all the “tagged” items?

They are rank filed and superimposed on a Google Earth map, to shows where the items appear in the Tasman Sea.



STEP 6

Then a team of engineers and scientists review the items and determine if search and rescue missions are in order.



STEP 7

And it all started with you . . .



David Dyche, Rosemary Dyche, David Dyche Jr.,
Evi Nemeth, Matthew Wootton, Danielle
Wright, and Kyle Jackson – *crew of the Nina*